



Glass Solutions for Interior & Exterior

Dividers • Wall Covers • Bathrooms & Showers • Kitchens • Balustrades & Balconies • Art & Cultural Canopies • Stained Glass • Signage & Memorial • Lighting • Table tops • Doors & Windows

Design Freedom and Functionality Control

The latest innovations in glass printing technology open new opportunities to combine boundless creativity with highly controlled functionality. Full expression of vision and outstanding budget-smart performance delivery are now possible with digital ceramic in-glass printing.

- **Easy implementation**

Of any pattern or design, with unlimited colors, and high resolution for fine details.

- **Durability and accuracy**

Inks are fused into the glass, providing unmatched resistance to scratching, acid, UV light and weather. Precise micro-drop printing allows accurate photorealistic and graphic designs.

- **A new medium for expression**

The ability to combine transparent, translucent and opaque details in any way, full freedom in colors and shades, and the possibility to create double-vision designs for different front and back experiences, are moving glass printing into the realm of tools for design.

Outstanding Functional Performance

COLOURHIVE's solution for digital ceramic in-glass printing meets complex functional performance requirements. It enables control of all special elements of architectural and designed glass:

- **Translucency/opacity**
- **Light diffusion and transmission**
- **Energy efficiency**
- **Privacy levels**
- **Slip resistance**

Sustainable Architecture

COLOURHIVE printed glass meets environmentally responsible architecture goals:

- The glass is recyclable and offers eco-friendly functionality.
- Using this technology can assist with LEED and other environmental certification.
- The printed glass contains no toxic heavy metals.
- It is an excellent building material for preventing bird collision.
- Printing a new design on glass panels is well-suited to urban renewal projects where redesigning only parts of buildings is preferable to demolition and rebuilding.
- Over time, if elements need to be replaced or added, individual glass panels can be printed and perfectly matched to the existing panels, eliminating the cost and waste of more extensive refurbishment.

Budget-Smart Design

From the initial design stage, through the value engineering process, COLOURHIVE assists architects, designers and consultants with calculating the long-term savings enabled by digital ceramic glass. If needed, COLOURHIVE helps evaluate alternative printed ways of using digital in-glass printing, so that printed glass elements can be kept in a project, even as budgets change over time.



New Era Technology
In Digital Ceramic In-Glass Printing

GUSTO GELATO

Architect

Iredale Pederson Hook

Location

Perth, WA, Australia

Printed By

Cooling Brothers

Photographer

Cooling Brothers Glass Company
and Robert Frith

SPECIFICATIONS

Printed Area

185 sqm / 1991 sqf

Number of Panels

130

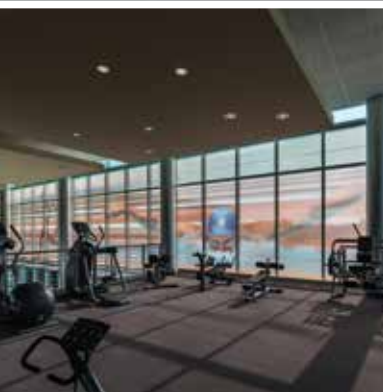
Colors

Grey scale raster imagery
White ink for vector graphic

Glass Type

13.52 Clear Low E with vanceva
interlayers and ceramic frit





MORaine VALLEY COMMUNITY COLLEGE

Architect

Demonica Kemper

Location

Palos Hills, IL, USA

Printed By

Goldray

SPECIFICATIONS

Number of Panels

55

Glass Type

6mm clear



KUOPIO UNIVERSITY HOSPITAL

Architect

Partanen & Lamusuo

Location

Kuopio, Finland

Printed By

Rakla Tampere Oy

SPECIFICATIONS

Printed Area

1,500 sqm / 16,146 sqf

Number of Panels

476

Colors

Digital mix

Glass Type

6+6 mm clear glass



WINNIPEG WOMEN & NEWBORN HOSPITAL

Architect

Parkin Architects and
Architecture49

Location

Winnipeg, MB, Canada

Printed By

Goldray

SPECIFICATIONS

Number of Panels

Approx. 1100

Glass Type

¼" clear tempered glass

¼" Solar Ban 70XL Low-E glass

Dual Vision

IGU's with Solar Ban 70XL Low-E





EDUCATION PARK EZINGE

Architect
Atelier Pro

Location
Meppel, the Netherlands

Printed By
Thiele Glas

Architect: Building
Atelier PRO architecten,
The Hague

Art facade
Driessen, Van Deijne,
Amsterdam

Photographer
Si-X & Bert Kiers,
Jean Paul Mioulet

SPECIFICATIONS

Printed Area
560 sqm / 6027 sqf

Glass Type
TG-PRINTdigital (Pos. 2) on
TG-PROTECT®-TVG /
TG-EMAILLE8mm Toughened
Safety Glass





90 GRAYSTON DRIVE SANDTON

Architect
GLH Architects

Location
Gauteng, South Africa

Printed By
PG Glass Building

SPECIFICATIONS

Printed Area
20 000 sqm / 215 278 sqf

Colors
Various colors

Glass Type
GraphixArt Pilkington K Low E
8mm Toughened Safety Glass

CARDBOARD CATHEDRAL

Architect

Shigeru Ban Architects

Location

Christchurch, New Zealand

Printed by

Metro Performance Glass

Photographer

Bridgit Anderson

SPECIFICATIONS

Printed Area

126 sqm / 1,356 sqf

Number of Panels

49

Colors

Digital mix

Glass Type

Clear insulated glass



POH MING TSE TEMPLE

Architect

Tan Peng Geok,
Park and Associates
Architects

Location

Singapore

Printed by

GSC Glass Ltd

SPECIFICATIONS

Printed Area

144 sqm / 1,550 sqf

Number of Panels

50

Colors

White

Glass Type

Laminated glass



GLASS FARM

Architect
MVRDV

Location
Schijndel, the Netherlands

Printed by
AGC Glass Europe

SPECIFICATIONS

Printed Area
1,800 sqm / 19,375 sqf

Number of Panels
500

Colors
Digital mix

Glass Type
Insulated glass





ORIGAMI BUILDING

Architect

Manuelle Gautrand

Location

Paris, France

Printed by

Interpane

Sicherheitsglas Gmbh

SPECIFICATIONS

Printed Area

900 sqm / 9,687 sqf

Number of Panels

962

Colors

Digital mix

Glass Type

TVG laminated glass





ROCKHEIM MUSEUM

Architect

Pir II

Location

Trondhjem, Norway

Printed by

Rakla, Finland

SPECIFICATIONS

Printed Area

800 sqm / 8,611 sqf

Number of Panels

420

Colors

White

Glass Type

TVG
laminated glass





SECRETS THE VINE

Architect

Rockwell Group, NY

Location

Cancun, Mexico

Printed by

PVA Vitro

SPECIFICATIONS / EXTERIOR

Printed Area

1,823 sqm / 19,622 sqf

Number of Panels

312

Colors

Grey and white

Glass Type

Clear laminated and tempered glass

SPECIFICATIONS / INTERIOR

Printed Area

10,630 sqm / 114,420 sqf

Number of Panels

3,949

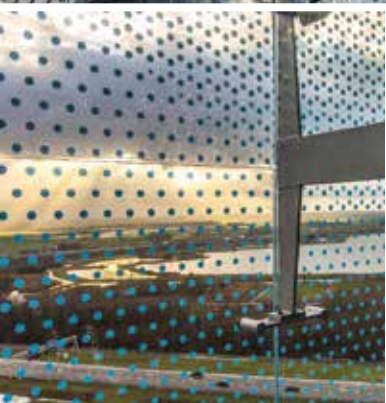
Colors

Grey and white

Glass Type

Clear tempered glass





FLETCHER HOTEL

Architect

Bentham Crouwel Architects

Location

Amsterdam, Holand

Printed by

Lisec Shanghai Group
of Companies

SPECIFICATIONS

Printed Area

3,312 sqm / 35,650 sqf

Number of Panels

590

Colors

Three shades of blue

Glass Type

Glass heat-strengthened



O'HARE INTERNATIONAL AIRPORT

Architect
Epstein

Location
Chicago, Illinois, USA

Printed by
Goldray Industries

Designer
Thirst

Photographer
Steve Hall © Hedrich Blessing

SPECIFICATIONS

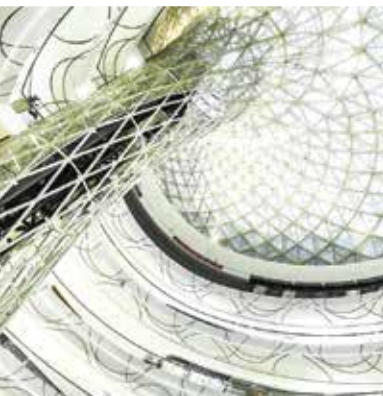
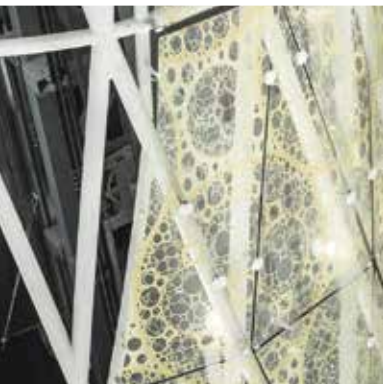
Printed Area
350 sqm / 3,746 sqf

Number of Panels
120

Colors
Digital mix

Glass Type
Laminated glass





HANJIE WANDA PLAZA

Architect
UNStudio

Location
Wuhan, China

Printed by
Glas & Tongue

Photographer
Edmon Leong

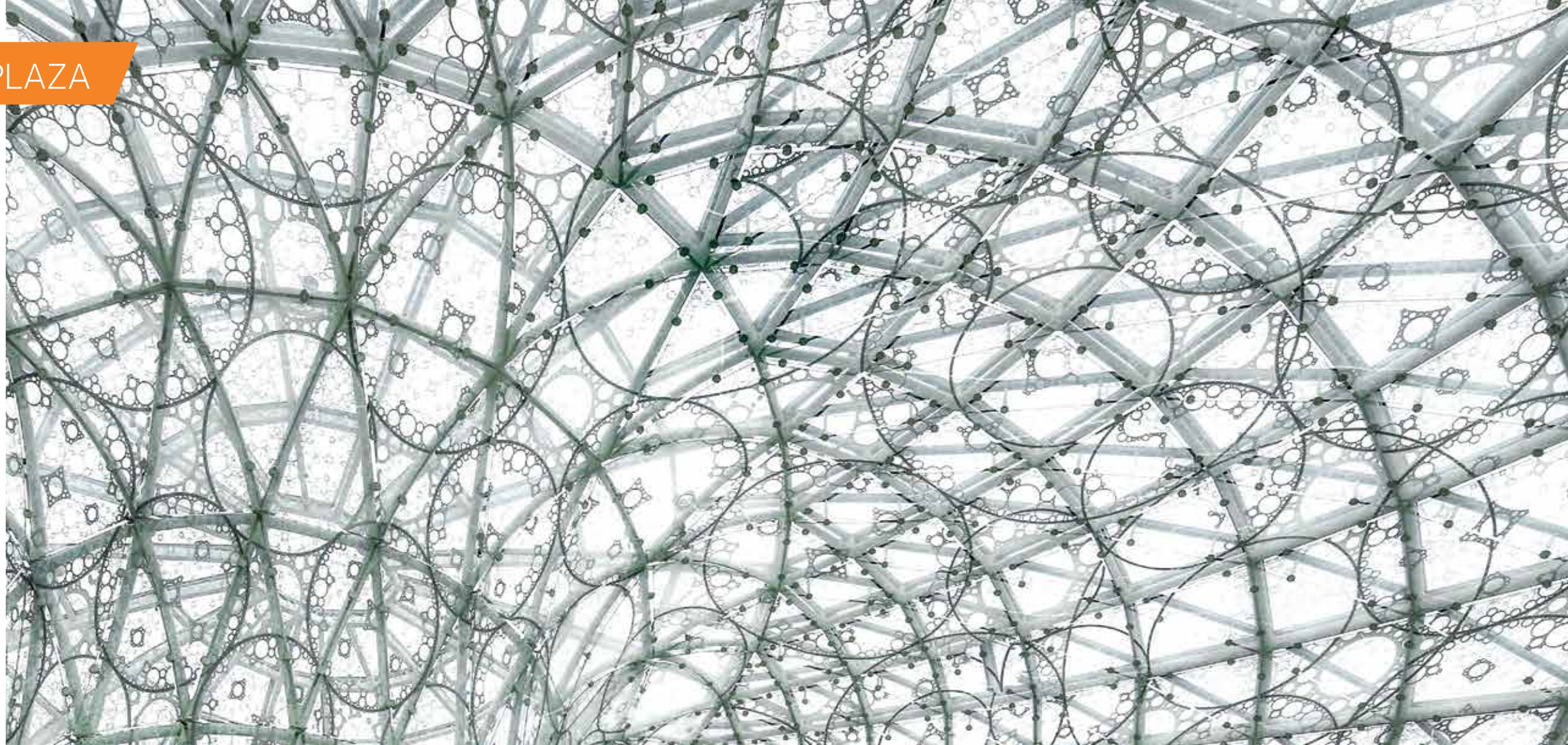
SPECIFICATIONS

Printed Area
3,500 sqm / 37,673 sqf

Number of Panels
2,346

Colors
Digital mix

Glass Type
6+6 IG white glass, 8+8
IG white bended glass





ART GALLERY

Architect

Turenscape Co., Ltd

Location

Guizhou, China

Printed by

South Bright Glass, China

SPECIFICATIONS

Printed Area

4,650 sqm / 50,052 sqf

Number of Panels

1,360

Colors

White

Glass Type

Low-iron glass



DIVIDERS

KANSAS UNIVERSITY HISTORY OF BASKETBALL MURAL

📍 Kansas, USA

AGNORA



DIVIDERS

ENVOY HOTEL

📍 Boston, USA

🏠 Alice® - GGI



DIVIDERS

PALO ALTO MEDICAL CENTER

📍 California, USA

🏗️ Alice® - GGI



DIVIDERS

SODA STREAM LABORATORY

📍 Airport-City, Israel

🏢 Phoenixia Industries



WALL COVERS CITY SKYLINE

Michigan, USA

Glassource



MERIDIAN BUSINESS CENTER

St. Petersburg, Russia

RSK

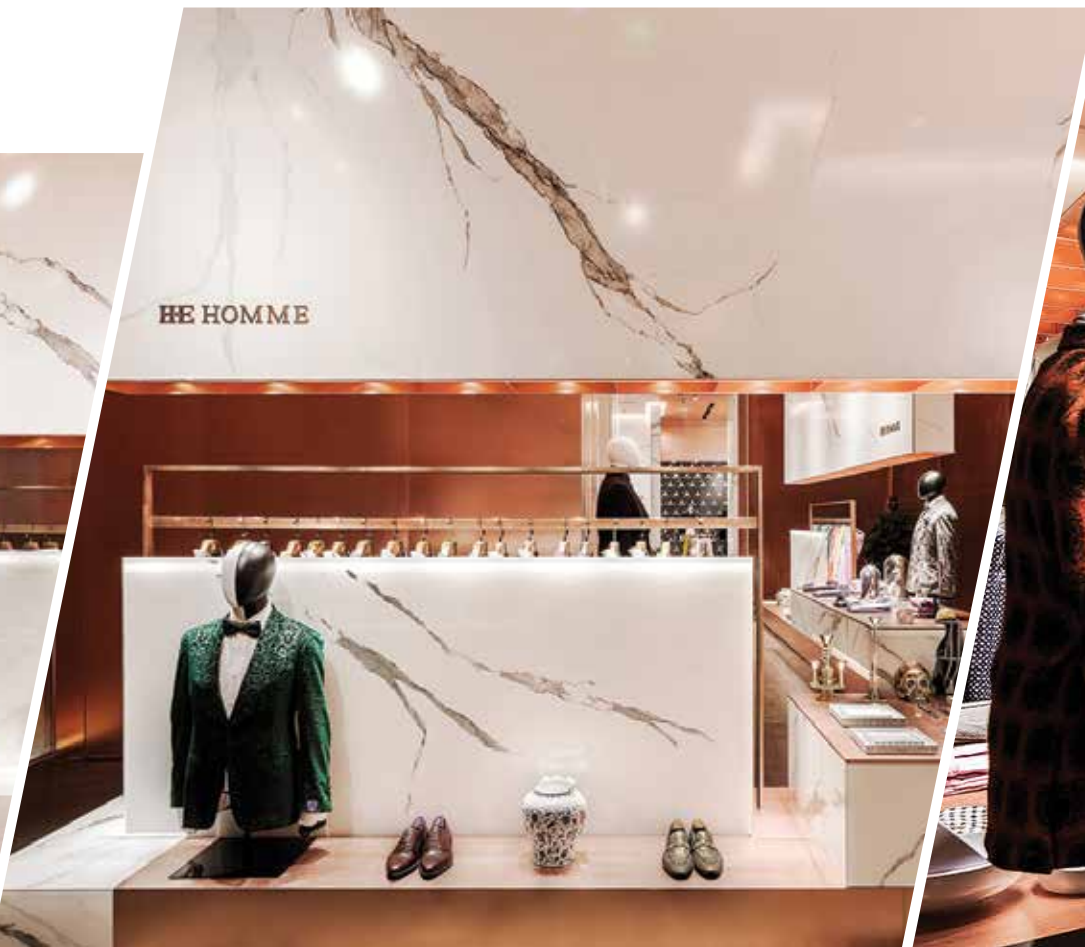


WALL COVERS

HE HOMME

📍 Shen Zhen, China

🏗 POBO Glass



WALL COVERS

INTERIOR RESIDENTIAL APARTMENTS

📍 St. Petersburg, Russia

RSK



WALL COVERS

CROWN METROPOL HOTEL

📍 Burswood, Western Australia

🏗️ Cooling Brothers

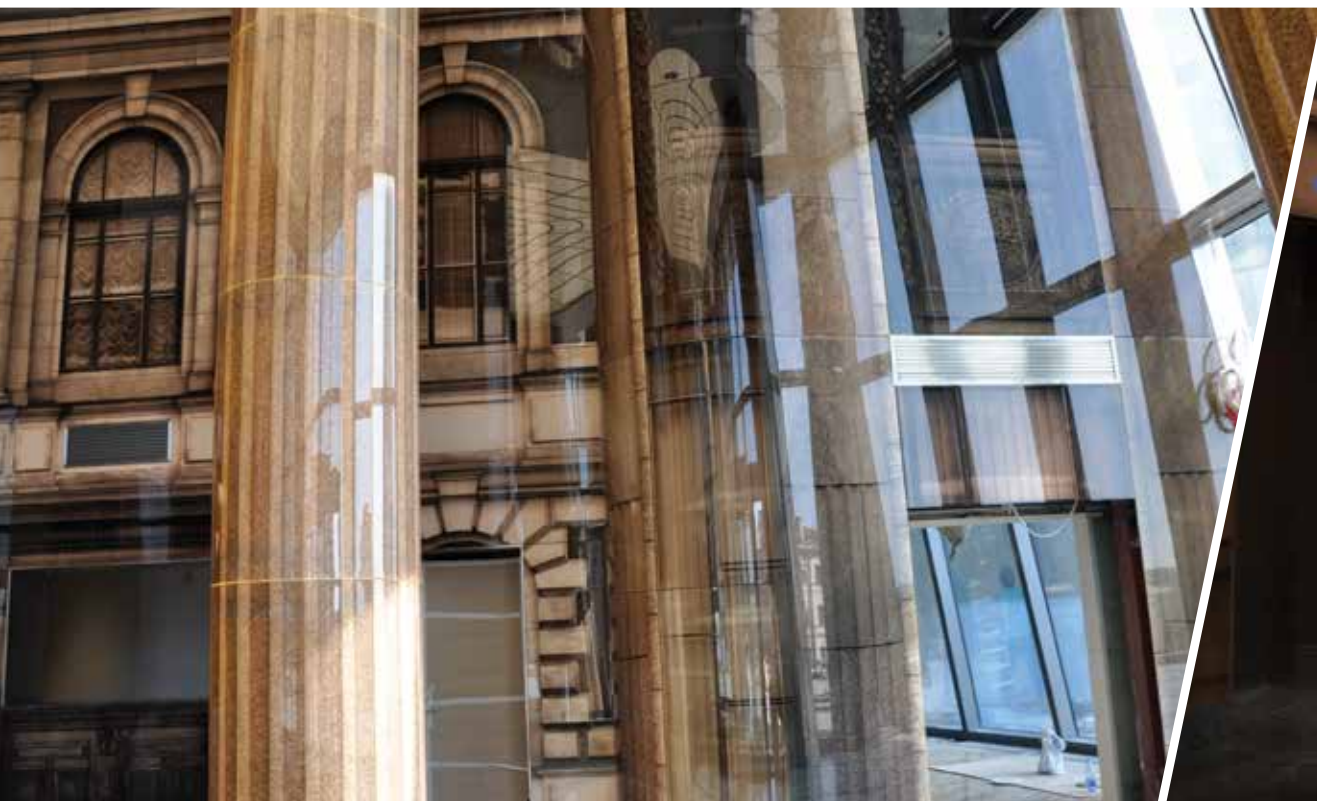


WALL COVERS

BANK OF ST. PETERSBURG

📍 St. Petersburg, Russia

AKMA



WALL COVERS

FUKU RESTAURANT

Perth, Australia

Cooling Brothers



BATHROOMS & SHOWERS

STONES SINKTOP

📍 Grand Haven, USA

🏠 Glassource



BATHROOMS & SHOWERS

CUMBRES Ñ LASTARRIA, BOUTIQUE HOTEL

📍 Santiago, Chile

🏢 Glasstech, Chile



BATHROOMS & SHOWERS

BLURAN DESIGN

📍 Rishon-Lezion, Israel

🏡 AA Tempering



BATHROOMS & SHOWERS

SECRETS THE VINE

📍 Cancun, Mexico

🏢 PVA Vitro



KITCHENS



Israel



Private Residences



Finland



Private Residence



BLUSTRADES & BALCONIES

LE SEMAPHORE

📍 Nantes, France

🏗️ MACOCCO Vitrages



SJÆLØR BOULEVARD RESIDENTIAL BUILDING

📍 Copenhagen, Denmark

🏗️ Glaseksperten



BLUSTRADES & BALCONIES NEWARK AIRPORT

📍 New Jersey, USA

🏗️ Alice® - GGI



GREEN SQUARE

📍 Melbourne, Australia

🏗️ Cooling Brothers



LIGHTING

HANOVER POST OAK

📍 Houston, TX, USA

🏢 Goldray



DOORS & WINDOWS

TEXAS A&M UNIVERSITY TAMU

Corpus Christi, TX, USA

Goldray



DOORS & WINDOWS

📍 Suzhou, China

🏢 Jingfeng Glass



DOORS & WINDOWS

📍 Vihti, Finland

🏠 Rakla



📍 Michigan, USA

🏠 Glassource



ART & CULTURAL

SPECTRUM PUBLIC ART

📍 Perth, Western Australia

🏗️ Cooling Brothers



ART & CULTURAL HOTEL TORREMAYOR

📍 Santiago, Chile

🏗 Glasstech, Chile



ART & CULTURAL

THE TOWER - CHRISTIANSBORG PALACE

📍 Copenhagen, Danmark

🏗 Glaseksperter

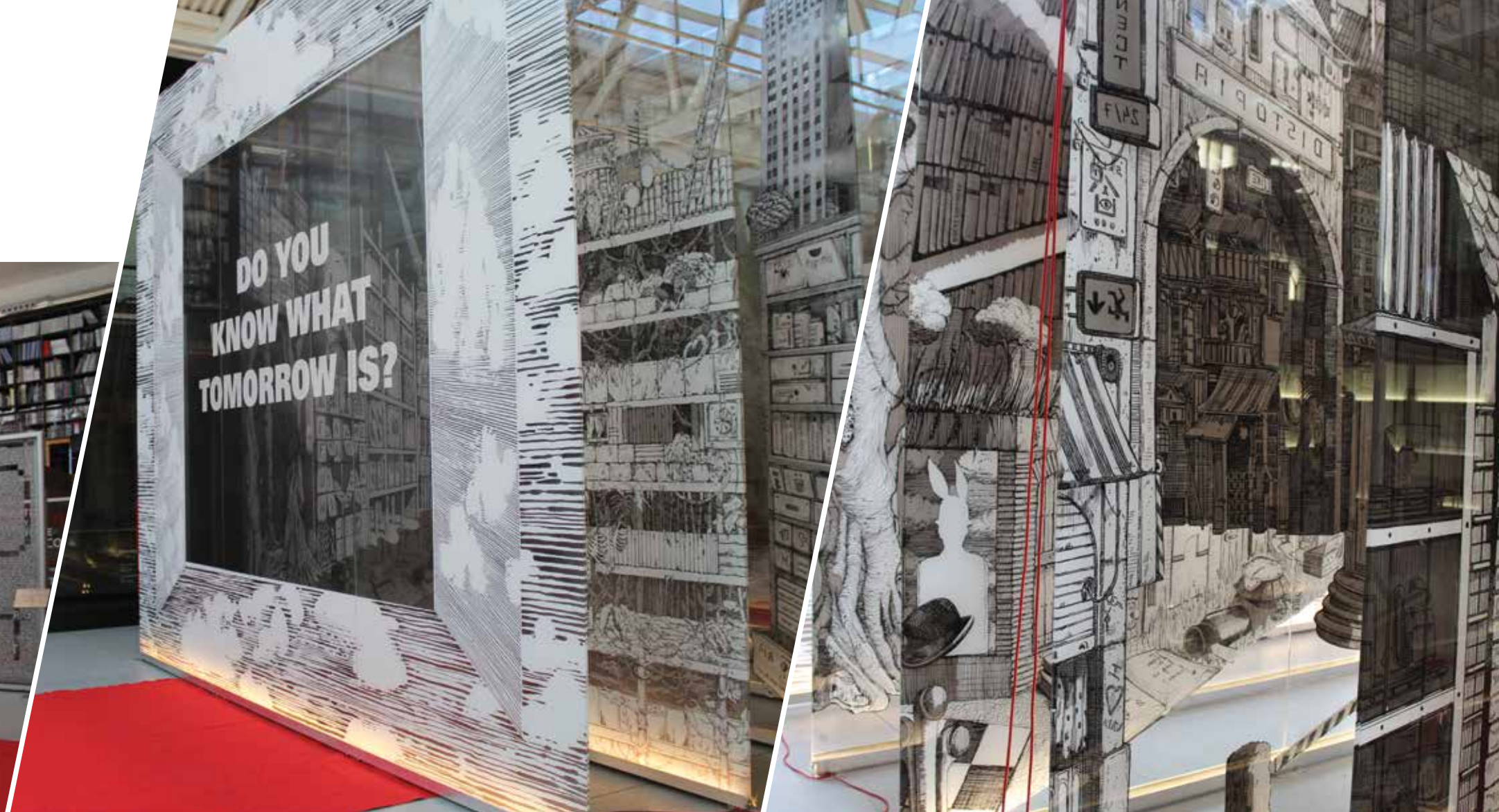


ART & CULTURAL

VIDROMAX - SHOWROOM

📍 Matosinhos, Portugal

🏠 Vidromax



CANOPIES

NY PRESBYTERIAN MEDICAL CENTER

📍 NY, USA

🏢 Alice® - GGI



ROMANO GUARDINI PLATZ

📍 Mainz, Germany

🏢 Thiele Glas

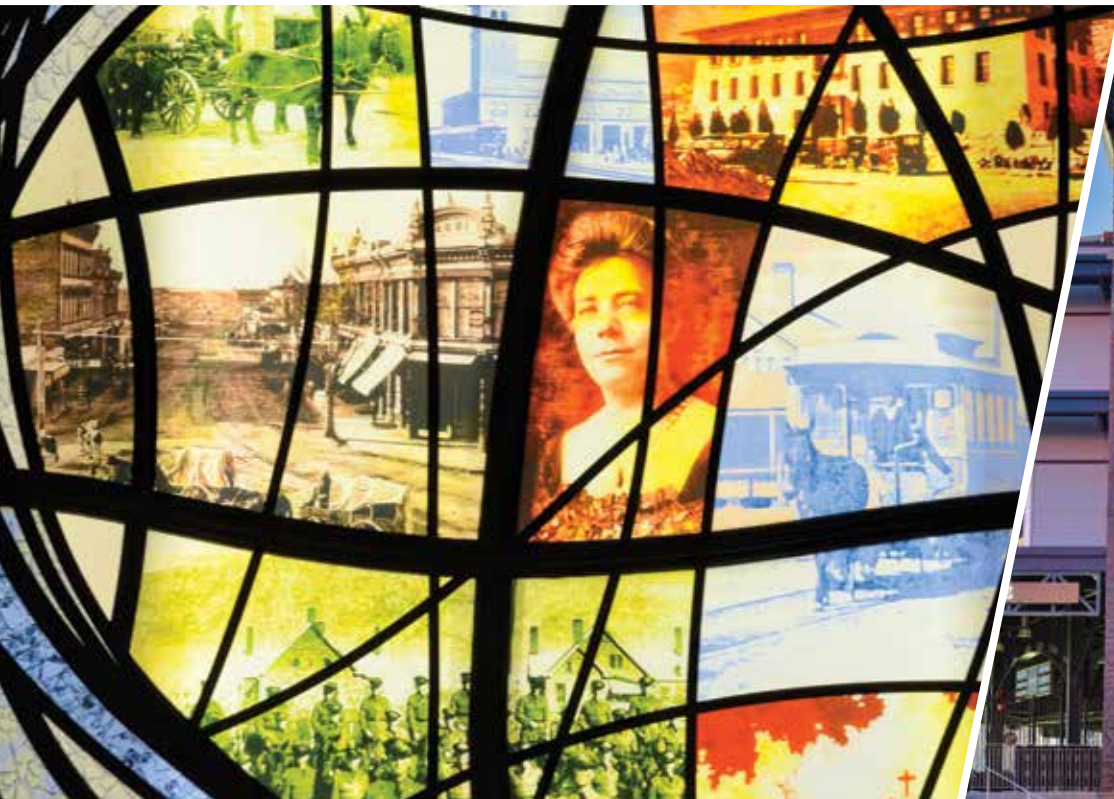


STAINED GLASS

EL PASO CLOCK TOWER

📍 El Paso TX , USA

🏗️ Viracon



STAINED GLASS

ST. MARY'S CHURCH

📍 Darwin, Australia

🏗️ Cooling Brothers



STRASBOURG CATHEDRAL

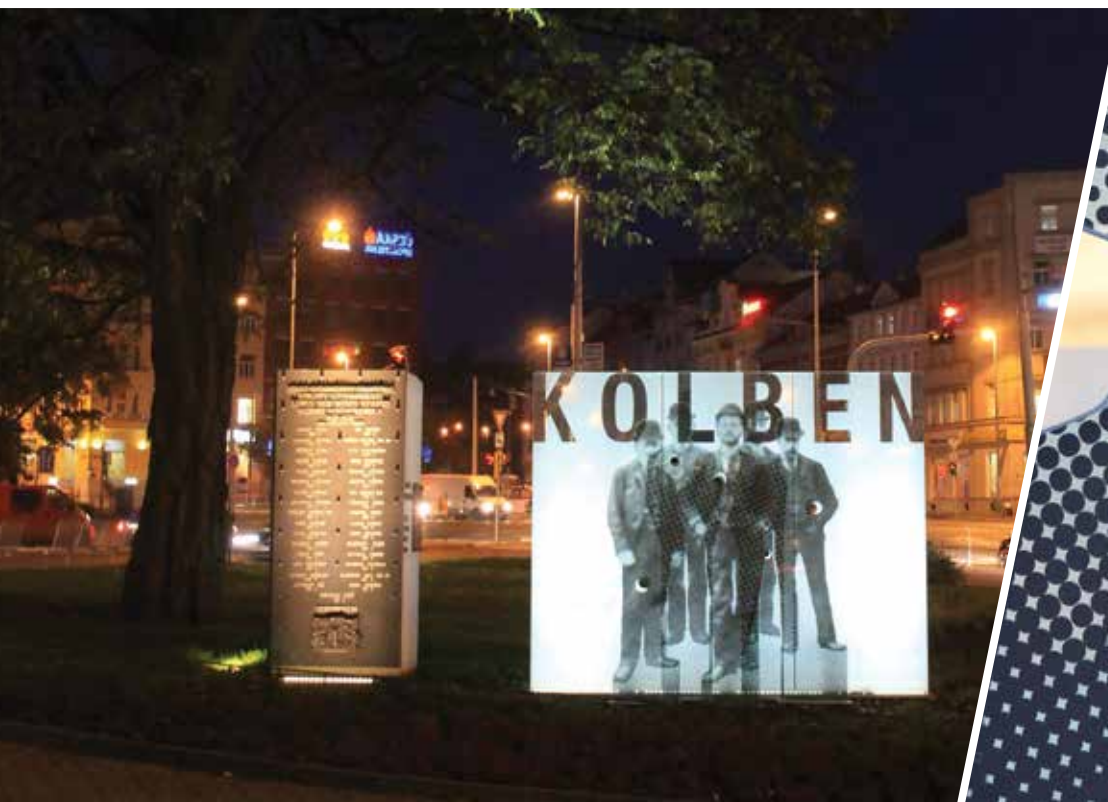


SIGNAGE & MEMORIAL

MEMORIAL OF EMIL KOLBEN

📍 Czech Republic

🏗️ IZOS



ANZAC MEMORIAL FOR OCEAN BEACH RSL

📍 Ocean Beach, Western Australia

🏗️ Cooling Brothers



ABOUT Anglo Eastern Glass

Founded by an eccentric young entrepreneur, Anglo Eastern Glass is a leading glass processor in Bangladesh. With a keen understanding of the visual and functional application of glass in Bangladesh, the company have experienced rapid growth in market share in a short period of time.

Our technical understanding of the glass processing and digital ceramic printing technology gives us the capability to effectively collaborate with your projects and make your artistic vision come to reality.

Our in house glass experts understands the multitude dynamics of glass, and how best to represent your ideas into reality. With a team of experts paying their undivided attention to cater for your valued project needs, we can ensure product and service excellence.

ABOUT COLOURHIVE™

COLOURHIVE is the world's leading provider of digital in-glass printing solutions that combine the durability of ceramic inks with the versatility and quality of digital printing.

COLOURHIVE helps architects express their artistic vision in: dividers, wall covers, bathrooms & showers, kitchens, balustrades & balconies, public art, canopies, windows, façades, stained glass, signage & memorials, and other glass elements and also meet the full range of functional requirements and sustainable architecture goals.



Anglo Eastern Glass

A Concern of Anglo Eastern Commodity Limited | Glass Processing Industry



www.angloeasternglass.com

Progress Tower, House 1 | 5th Floor, Road 23 | Gulshan 1, Dhaka 1212

Phone: +88 02 986 0881